



HRA Gray & Pape is a joint venture of two long-established regional firms: Historical Research Associates, Inc., headquartered in Missoula, Montana; and Gray & Pape, Inc., headquartered in Cincinnati, Ohio

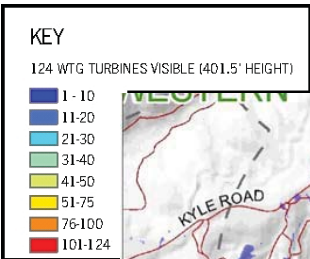
#### **HRA Gray & Pape offers clients:**

- Full range of cultural resource management (CRM) and historic preservation services nationwide
- Offices in ten states
- Project experience in 47 states
- Professional staff of historians, archaeologists, architectural historians, preservation planners, photographers, and GIS professionals
- Broad understanding of cultural resource compliance issues from federal, state, and local perspectives

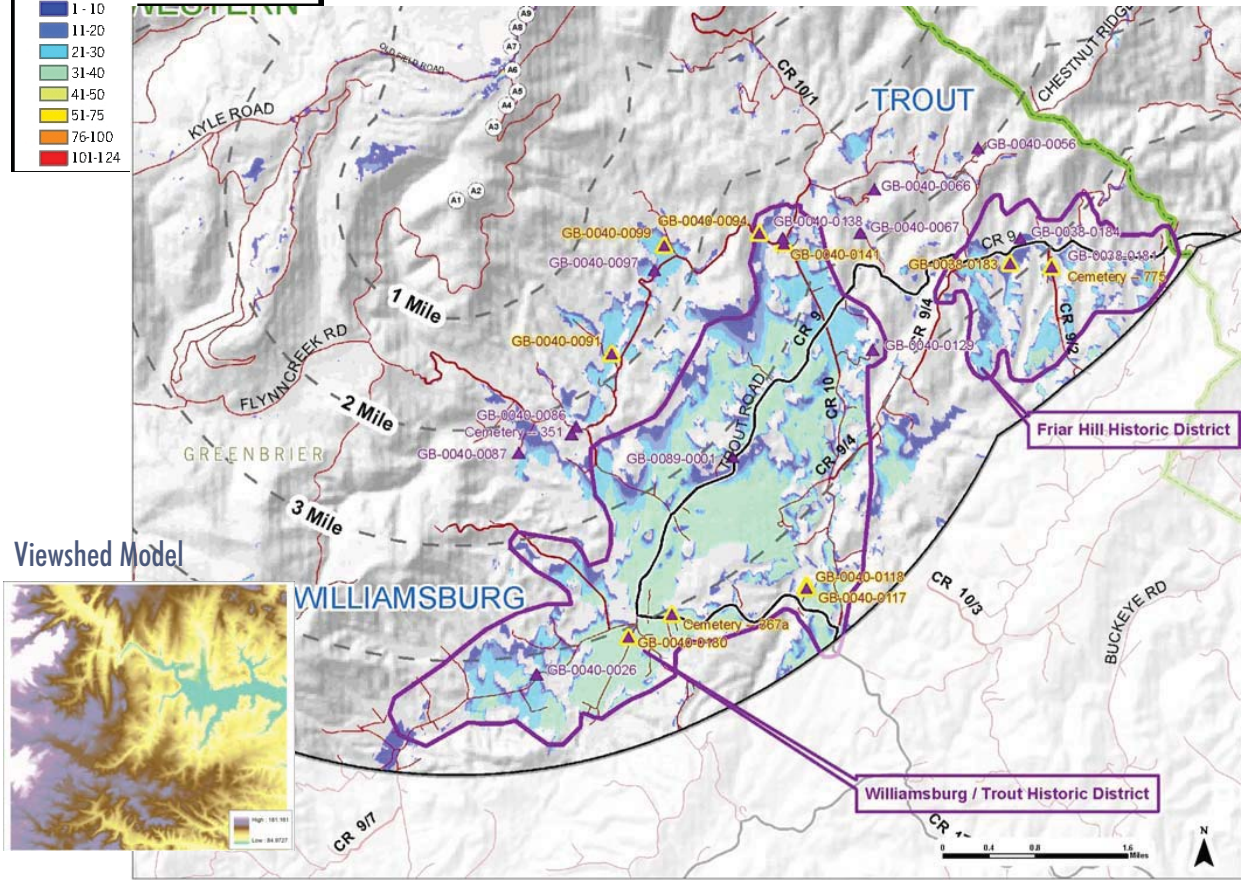
#### **Services include:**

- Definition of Area of potential effects
- Identification and evaluation of historic properties
- Assessment of project effects
- Development and implementation of mitigation plans
- Preparation of Memorandum of Agreement
- Consultation with the public and review agencies
- Review of ground disturbing activities
- Viewshed analyses
- Cultural landscape analyses





### Detail of Historic District



### Relevant Experience

- Beech Ridge Wind Farm History/Architecture Investigations, Greenbrier Co., WV (BHE)
- Archaeological Investigations, Meadow Lakes Wind Farm Project, White Co., IN (Tetra Tech)
- Cultural Resource Records Search for Wind Farm Project, Allen Co., IN (BHE)
- Horn Butte Wind Farm Project, Gilliam County, Oregon (Ecology and Environment and Invenergy, LLC)
- Miller Ranch Wind Generation Project, Klickitat County, Washington (Tetra Tech EC and Northwest Wind Partners, Inc.)
- Goshen North Wind Resource Area, Bonneville County, Idaho (Tetra Tech EC and British Petroleum Alternative Energy North American, Inc.)
- Cape Wind Project: Project Development Consultations, Nantucket Sound, MA (Perkins Cole)
- Clinch River Transmission Line Cultural Resource Survey and Viewshed Analysis, Russell Co., VA (Dominion Virginia Power)
- Route 215 Cultural Landscape Study, Fauquier Co., VA (Louis Berger Group)
- Ladysmith Viewshed Analysis, Caroline Co., VA (Dominion Virginia Power)
- Saylor Park Cement Distribution Project Visual Effects Investigations, Hamilton Co., OH (Lone Star)
- Historical Research and Architecture/Landscape Survey, Victoria Exelon Project, Victoria Co., TX (Geo-Marine)
- Great Bridge Cultural Landscape Report, Chesapeake, VA (Great Bridge Battlefield and Waterways History Foundation)
- Cultural Landscape Evaluation, Washington SR 20, Island Co., WA (WSDOT, Arcadis US, Inc.)
- Cultural Landscape Assessment, Washington SR 14, Clark, Skamania, and Klickitat Counties, WA (WSDOT, Arcadis US, Inc.)
- Mount Storm Wind Energy Project: Large-Format Photo Documentation of Jones Farm, Grant Co., WV (AMEC Earth & Environmental)